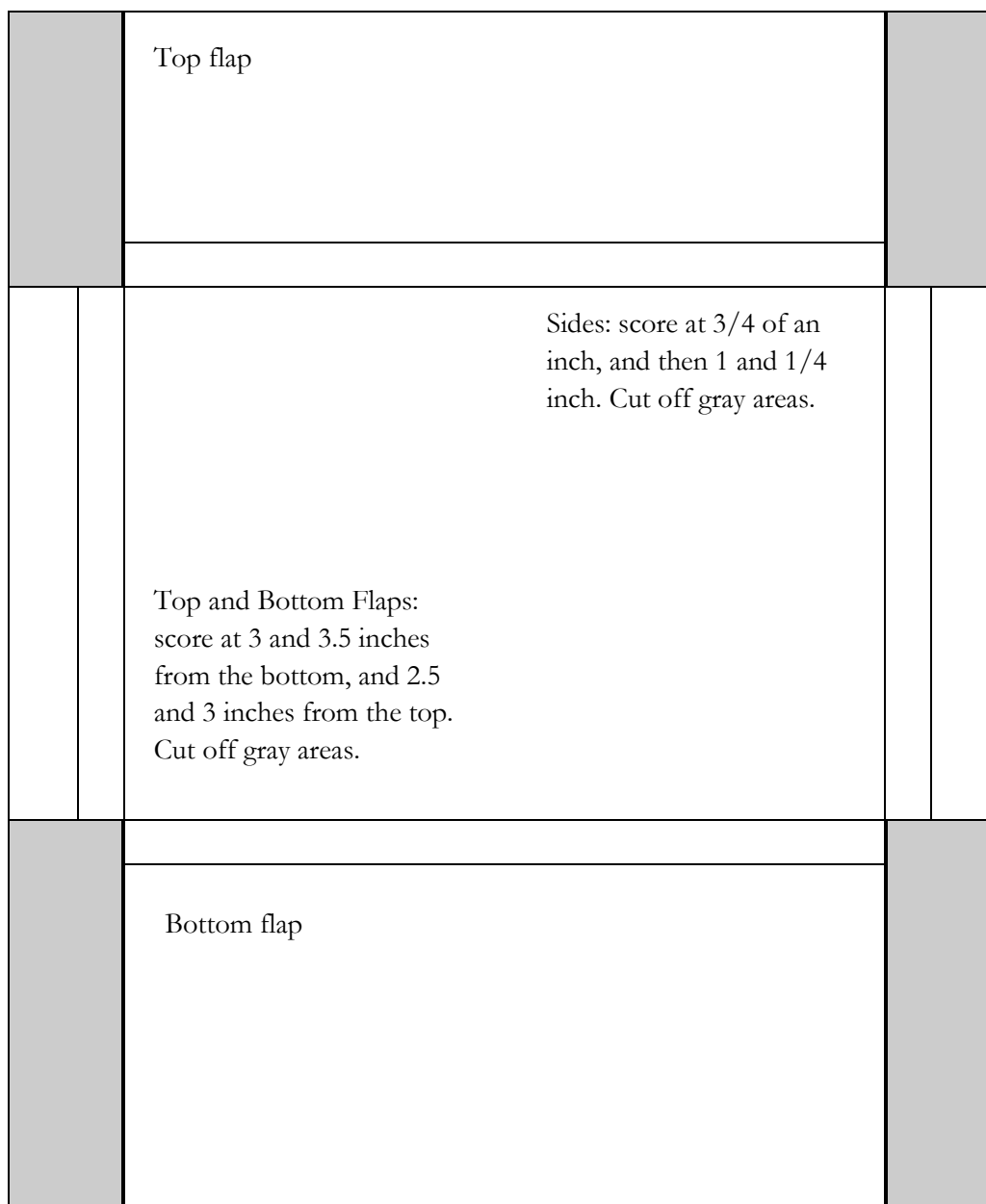


Stationary Box Scoring Guide



To complete: Stamp sheet of 8.5x11 cardstock as desired. After scoring and trimming off gray areas, corner-punch the top flap and inside of the side flaps.

Fold all flaps into the middle and secure with Sticky Strip. Secure top opening flap with a Velcro tab.

To turn into a purse: Attach 10-12 inches of ribbon with a brad on each side of the box near the top flap.

Fill with cards and matching envelopes for a great gift!

This template provided by Lyssa Griffin Zwolanek, Stampin' Up! (920) 261-3962

lmnoz@ticon.net www.Lyssa.stampinup.net